

SISAL

Product Description:

Sisal represents the leaves of the Sisal-Agave. The fine surface, which flows slightly wavy appears very filigree and elegant with an embossment of up to 1.3mm deepness.

Composition:

Sisal is an embossed panel with special developed veneer with a MDF core.

Fields of application:

Only for interior: wall cladding, interior fitout, shop and ture. Shop and fair construction. Doors.

Technical Data:

First given measurement specifies the direction of embossment:

Invoiced size (mm): 2450 x 1050 / 1050 x 2450
3135 x 1270 / 1270 x 3135
Delivered size (mm): 2450 x 1050 / 1050 x 2450
3145 x 1280 / 1280 x 3145

Repeating pattern: No repeating pattern

Available thicknesses: 4.5 mm / 18.5 mm

Coreboard: MDF

Surface: raw, unlacquered

Density: ca. 900 kg/m³

Weight: ca. 5 kg/m² (4.5 mm)
ca. 17 kg/m² (18.5 mm)

Embossment: one-side

Deepness of structure: max. 1.3 mm

Tolerances:

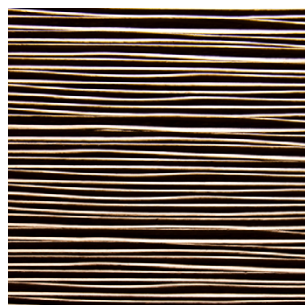
Straightness: 3.0 mm per Metre
Size accuracy: +/- 1.0 mm per Metre
Thickness allowance: +/- 0.3 mm
Exactitude of profile: +/- 1.5 mm



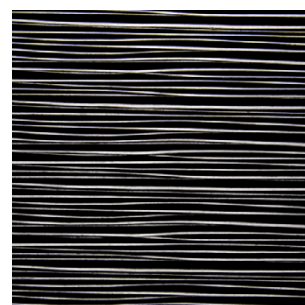
White
Fineline veneer



Light Oak
Fineline veneer



Walnut
Fineline veneer



Black
Fineline veneer

Explanatory notes:

The given details in this data sheet are our field-tested experience. They could not consider every parameter, use case or application and they are therefore without commitment. These data does not represent guarantee of condition in the legal sense or a assurance of the characteristics. No legal claims could be derived by using the information given in these data sheets or by our free of charge technical consultants. Images are for illustration purposes only. Wood is a natural product, deviations in color and texture can occur. Please visit our website for an impression of the color range, which can be expected.